



Intelligent UPS Module

12V/9~36V DC Input, 12V DC Output Uninterruptible Power Supply Module with Diagnostics

AUPS Series



AUPS-A10
VESA 75, 12V DC Input
12V DC, 5A, 60W Output



AUPS-A20
VESA 75, 9V~36V DC Input
12V DC, 5A, 60W Output



AUPS-B10
VESA 75/100, 12V DC Input
12V DC, 8.3A, 100W Output



AUPS-B20
VESA 75/100, 9V~36V DC Input
12V DC, 8.3A, 100W Output

- VESA 75 or VESA 100 mounting
- 9-36V input through terminal or power jack, or 12V through power jack only
- Battery status and charge monitoring utility. Remote network management capabilities

Intelligent UPS Module

High Energy Density / Lightweight / Compact DC to DC UPS & Power Module

Protect your panel PC from electrical damage and greatly reduce the risk of losing data.

The UPS module serves as temporary power during a short break in power and allows a safe system shutdown for longer periods of power loss.



Features

- 60W (5A @ 12V) or 100W (8.3A @ 12V) output
- 28Wh or 56Wh, for more than 140 minutes operation time (dependent on panel PC power requirements)
- Rugged metal enclosure for standard VESA 75/100 mounting
- Web-based, remote network management, no software installation required
- Local PC-based monitoring software for input detection and battery status monitoring
- Auto shut down when battery low
- Remote DC output ON/OFF switch for external switch installation
- Provides stable power to the PC during line sags and spikes and absorbs power surges and transients, protecting expensive equipment

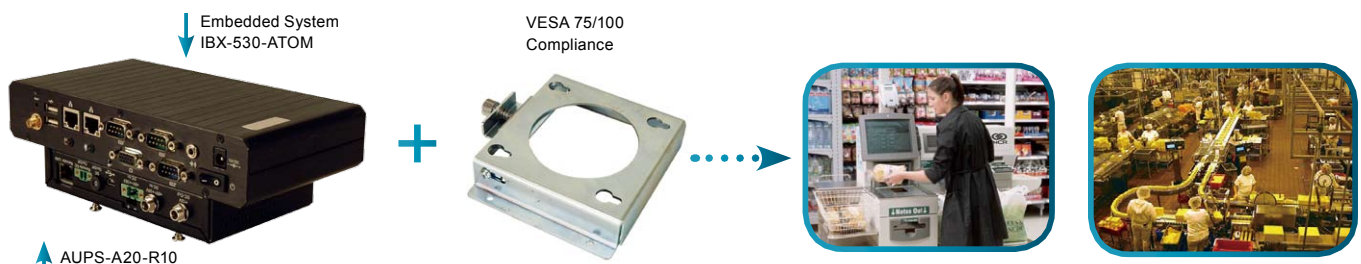
Model Name	AUPS-A10-R10 AUPS-A20-R10	AUPS-B10-R10 AUPS-B20-R10
Input Power	12V AUPS-A20-R10	12V AUPS-B20-R10
Dimension	150x95x34mm	170x150x34mm
Battery Capacity	28 Wh (Watt/H our)	56 Wh (Watt/Hour)
Output Power	60W (5A@12V)	100W (8.3A@12V)
VESA Support	75x75 mm	75 x 75 mm 100 x 100 mm

	LED 1	LED 2	LED 3
Color	Green	Yellow	Orange
Function	Power Input	Charger Status	Battery Status
Dark	DC Power Out		
Light	DC Power In	Discharging	Battery Full
Blinking		Charging	Battery Low



AUPS Applications

Provide standard VESA mounting to fit in all kind of situations in any application. The fanless embedded system, IBX-530-ATOM which only consumes 15 watts, applied with the AUPS-A20-R10 offers reliable wide range DC input, economical power protection and more than 140 minutes operation time



AUPS Network Administration Tool

Network Remote Management Anywhere

The AUPS can be setup with a static IP address, or be assigned one through DHCP over a network. The AUPS can then be configured from anywhere with network access.



Network Remote Management Software



Battery Capacity Status

Power On/OFF

UPS Status Monitoring

Configuration

Track Version: v1.1
Build Date: Sep 30 2008 11:20:54

- STATUS - display UPS status and change UPS ON/OFF
- Send E-mail - Send UPS status with E-MAIL.
- Configuration - setup IP Address and enable DHCP.

POWER ON/OFF: (click to toggle)

Shut Down:

STATUS: USE

Capacity(%): 88

VOLTAGE(mV): 8003

Current(A): 0

Temperature(C): 36

RemainTime(min): 1534

Email Status Report

Send E-mail

Configuration

Enter the appropriate settings in the fields below:
(Your SMTP server may not require a user name or password.)

SMTP Server: _____ Port: _____

User Name: _____

Password: _____

To: _____

Message: This message was sent by the IEI TCP/IP Stack. See the attached file for detailed IP stack information.

Send Message

Remote control DC output ON/OFF via web interface.

Easy Management

The remote management software utility and application program allows users to easily get the status of the AUPS and to control the AUPS power functions from anywhere with an Internet connection.



REMOTE AP

Power On Power Off

System On System Off

Shut Down

AUPS Remote AP

IEI Technology Corp.

IP Address	Host Name	MAC Address	Other Info
10.4.10.26	IEI	10-20-20-00-00-00	ALARM
10.4.10.30	IEI	10-20-20-00-00-01	

- Click ALARM to get each AUPS status via internet
- STATUS
 - Send E-mail
 - Board configuration

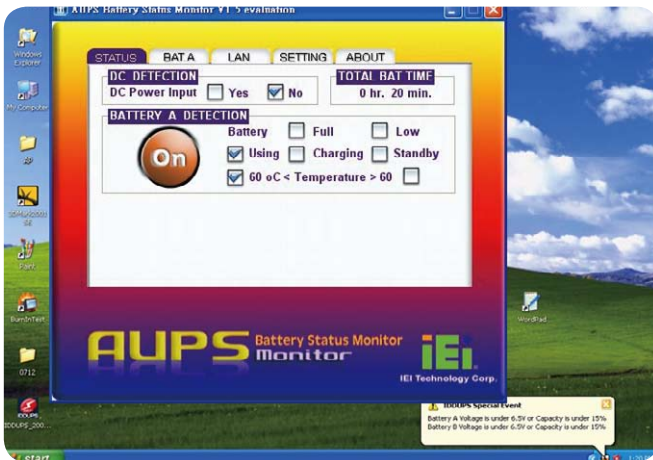
Network Remote Management Software

AUPS Local USB Utility Tool

Battery Monitoring Utility

Monitor The Most Critical Battery Functions on the Local Machine

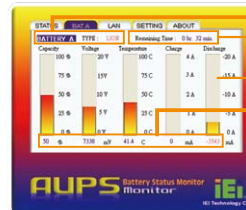
The battery monitoring utility allows AUPS status monitoring and provides the ability to change the settings
Uninterruptible Power Systems is a significant product that serves as emergency power when you suffer from electric event



- DC Input Detection
- Battery Status Detection

AUPS STATUS

• STATUS shows DC / Battery power input detection



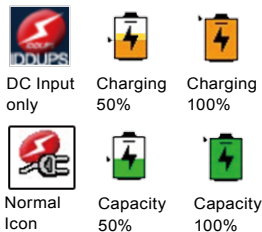
- Battery Type
- Battery usage remaining time
- Battery capacity bar
- Real time information updating

BATTERY STATUS

• BAT.A shows Battery status real time monitoring

IEI smart battery software

- Battery detection
- Battery capacity status
- Battery charge
- DC Input Indicator
- Battery Indicator
- Temperature warning
- Low battery alarm
- Connection port status



LAN CONFIGURATION

• LAN shows system IP Address information



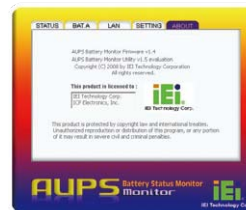
SETTING

• SETTING shows Connection Detection port



In addition, the utility software provide the following functions:

- Current Power source.
- Battery status.
- Charging status.
- Percentage remaining



ABOUT

• shows AUPS Utility information

Meanwhile, IEI also provides AUPS API SDK and command list for customer programming under DOS or Linux system

AUPS API Content

- Inti()
- AUPS Close()
- WriteCommand()
- ReadCommand()
- Error Code Definition()

AUPS API SDK

- AUPS API.pdf
- AUPS API.dll
- AUPS API.h
- AUPS API.lib

AUPS API SDK/Content



Linux



AUPS Applications

Power Bank Solution

AUPS modules act as power input regulator to prevent unstable power input damage and avoid protect against unexpected power loss.



Mobile System Solution

AUPS provides backup power for the data sensitive part of movable equipment, allowing charging and battery replacement of the primary power without shutting down the data terminal.



AFOLUX PPC Mobile Solution with AUPS

- Redundant Power Protection
- Loss of main power does not affect the data processing equipment. If main power fails, the AUPS will provide power to the PC.
- Rechargeable Temporary Battery Pack
- More than 140 minutes of uninterrupted operation, allowing time for an external battery charge or relocation data backup.
- Continuous system operation reduces the risk of data loss
- VESA compliance makes installation simple, with only the included brackets needed for installation on a standard VESA bracket.

Specification

AUPS module Spec

Model Name		AUPS-A10	AUPS-A20	AUPS-B10	AUPS-B20
VESA Type		VESA 75	VESA 75	VESA 75 and 100	VESA 75 and 100
Input Data	Input voltage Unated/range	DC +12V	DC +9V~+36V	DC +12V	DC +9V~+36V
	Input current rated	1. Adapter is 12V~6A (Load is 60W) 2. Battery is 6V~12A (Load is 60W)		1. Adapter is 12V~9A (Load is 100W) 2. Battery is 12V~9A (Load is 100W)	
	Standby power consumption	0.3A (0.2A if Network Management disabled)			
	Operation with charging current	500mA			
	Operation with charging power consumption	6W		10W	
Charging time with system ON/OFF		8hrs / 2hrs (Battery empty)			
Output Data	Output voltage for normal operation	DC +12V +/-5%			
	Output voltage for battery operation, approx.	6~8.4V DC6 V (exhaustive discharge protection)		12~16.8V DC12 V (exhaustive discharge protection)	
	output current	0A~5A		0A~8.3A	
	Efficiency(nominal operation)/power lossat Vin=12V, Iout=80% of full loading	89%	93%	95%	94%
Protection	short-circuit protection	Yes			
	Exhaustive discharge protection	1.Battery low is 10% of Battery capacity 2.Shutdown 5% of Battery capacity (Default) 3.The end of Battery discharge voltage is 6V			
	EMC / Safety certification	UL, TUV, CE, FCC			
Monitoring	Ethernet interface	Web-based, specification 10/100Mbps with RJ-45 connection, Cat. 5 cable			
	USB interface	PC-capable, specification 2.0 with full speed, i.e. 2 Mbit/s. Standard 4-core shielded cable, USB Series "mini B" connector to DC-UPS			
Physical	Dimensions	152mm(L) * 96mm(W)*28mm(H)		174mm(L) * 147mm(W)*35mm(H)	
	Weight	1.2kg		1.8kg	
	Green				
LED Indicator	Yellow	DC power input			
	Orange	Battery charging			
	Green	Battery discharging			
Environment	Operating Tem.	0°C~40°C			
	Storage Tem.	-20°C~50°C			

Note1: Suggest to connect DC input constantly. Battery will be drained after 14 hours.

Note2: System power consumption + AUPS charging power consumption = Total watts of power source

Battery Module spec

Model Name		AUPS-A10	AUPS-A20	AUPS-B10	AUPS-B20
Battery Model Name		BAT-LI-2S2P3800		BAT-LI-4S2P3800	
Battery	battery type	Li-Ion 2S2P 7.4V		Li-Ion 4S2P 14.8V	
	Battery capacity	7.4V 3800mAH		14.8V, 3800mAH	
	Maximum charge voltage	8.4V		16.8V	
	The end of discharging voltage	5.6V		11.2V	
	Suggestive charging current (Max.)	2A		2A	
	System continuous discharging current(Max)	7.6A		7.6A	
	The end of charge condition	250mA/1Min		200mA/1Min	
	Discharge protection	Under Voltage Protection / Over Current Protection			
	Charge protection	Over Voltage Protection / Over Current Protection			
	Ambient temp	0°C~40°C		0°C~40°C	
	Storage Tem	-20°C~60°C		-20°C~60°C	
	Self-discharge rate	340uA~440uA			
	Dimensions	139mm(L) * 47mm(W)*26mm(H)		165mm(L) * 76mm(W)*26mm(H)	
	Weight	236g		450g	
	Cycle life	300 charge/discharge cycles			
	Backup	60W/10Min		100W/10Min	
	Safety class	CE,UL,TUV			

Note: Suggest to replace Battery Module every 2 years.

Selection table for UPS modules and mains buffering time

AFOLUX PPC	AUPS-A10	AUPS-A20	AUPS-B10	AUPS-B20
Under 50W solution				
AFL-057-LX (15W~20W)	145min	145min	290min	290min
AFL-07A-ATOM (20W~25W)	100min	100min	200min	200min
AFL-08AH-ATOM (25W~30W)	70min	70min	140min	140min
AFL-10A-ATOM (25~30W)	70min	70min	140min	140min
AFL-10A-9103 (40W~45W)	50min	50min	100min	100min
AFL-10A-LX (25W~30W)	70min	70min	140min	140min
AFL-12A-LX (25W~30W)	70min	70min	140min	140min
AFL-12B-CX2 (38W~42W)	50min	50min	100min	100min
AFL-12A-ATOM (25W~30W)	70min	70min	140min	140min
AFL-12B-9103 (45W~48W)	45min	45min	90min	90min
50W ~ 100W solution				
AFL-15B-915-CM370 (58W~63W)	-	-	35min	35min
AFL-15C-9652-T7500 (65W~70W)	-	-	30min	30min
AFL-17B-915-CM370 (75W~80W)	-	-	25min	25min
AFL-17C-9652-T7500 (85W~90W)	-	-	20min	20min
AFL-19B-915-CM370 (75W~80W)	-	-	25min	25min
AFL-19C-9652-T7500 (85W~90W)	-	-	20min	20min

Note: The backup time could be varied on different models or operating temperature.

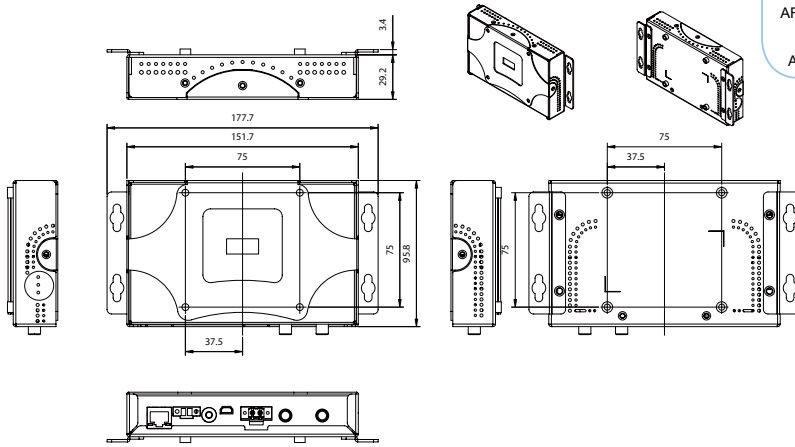


BAT-LI-2S2P3800

BAT-LI-4S2P3800

AUPS Mechanical Drawing

AUPS-A10/20 (Unit:mm)



Connector for AFOLUX Panel PC:
 AFL-LX PPC series
 AFL-LXPOS PPC series
 AFL-CX2 PPC series
 AFL-9103 PPC series
 AFL-ATOM PPC series

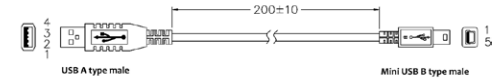
DC Power Cable (DC plug to DC plug) without lock
 32000-120400-RS



DC Power Cable (DC plug to DC plug) with lock
 32000-115300-RS



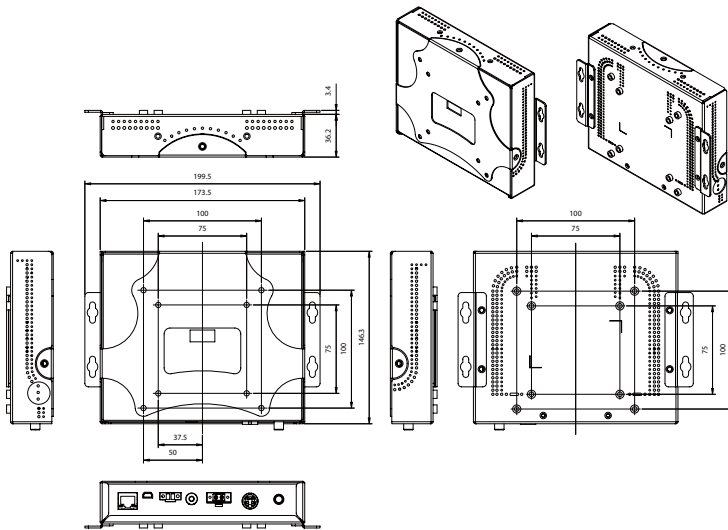
USB Connection Cable
 32000-115500-RS



Remote Switch Cable
 32000-115600-RS

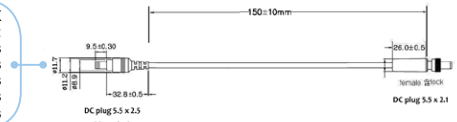


AUPS-B10/20 (Unit:mm)



Connector for AFOLUX Panel PC:
 AFL-LX PPC series
 AFL-LXPOS PPC series
 AFL-CX2 PPC series
 AFL-9103 PPC series
 AFL-ATOM PPC series

DC Power Cable (DC plug to DC plug) without lock
 32000-120400-RS



DC Power Cable (DC plug to DC plug) with lock
 32000-115300-RS

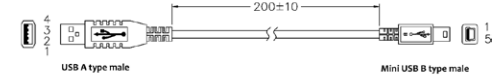


DC Power Cable (DC plug to mini DIN)
 32000-115400-RS

Connector for AFOLUX Panel PC:
 AFL-915 PPC series
 AFL-965 PPC series



USB Connection Cable
 32000-115500-RS



Remote Switch Cable
 32000-115600-RS



Ordering Information

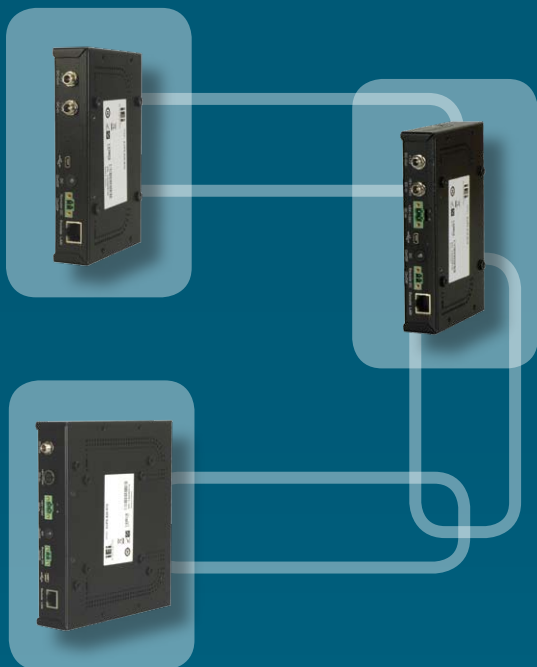
Part No.	Description
AUPS-A10-R10	VESA 75, DC 12V input, 12V output 60W UPS module with 3800mAh, 2S2P Li-Ion battery
AUPS-A20-R10	VESA 75, DC 9~36V input, 12V output 60W UPS module with 3800mAh, 2S2P Li-Ion battery
AUPS-B10-R10	VESA 100, DC 12V input, 12V output 100W UPS module with 3800mAh, 2S4P Li-Ion battery
AUPS-B20-R10	VESA 100, DC 9~36V input, 12V output 100W UPS module with 3800mAh, 2S4P Li-Ion battery
BAT-LI-2S2P3800 (AUPS-A10/20)	SMART BATTERY;TE9IC032K1002 ;Lithium ion Battery(2S2P); 7.4V;3800mAh;RoHS
BAT-LI-4S2P3800 (AUPS-B10/20)	SMART BATTERY;TE9IC042K1002 ;Lithium ion Battery(4S2P); 14.8V;3800mAh;RoHS

Packing List

Item	DC power cable, 150mm. mini Din 4 pin male to DC plug 5.0x2.1 (AUPS-B10/B20 only)	DC power cable, 150mm, DC plug 5.5x2.1 to DC plug 5.0x2.5 without lock	DC power cable, 150mm, DC plug 5.5x2.1 to DC plug 5.0x2.5 with lock	USB cable, 200mm, USB type A male to mini USB	Remote switch cable, 1200mm	Screws kit	Utility CD (including utility software and user's guide)
Part Number	32000-115400-RS	32000-120400-RS	32000-115300-RS	32000-115500-RS	32000-115600-RS	44013-030041-RS	7B000-000087-RS
Q'ty	1	1	1	1	1	1	1

AUPS

.....> AFOLUX



AFL-056A



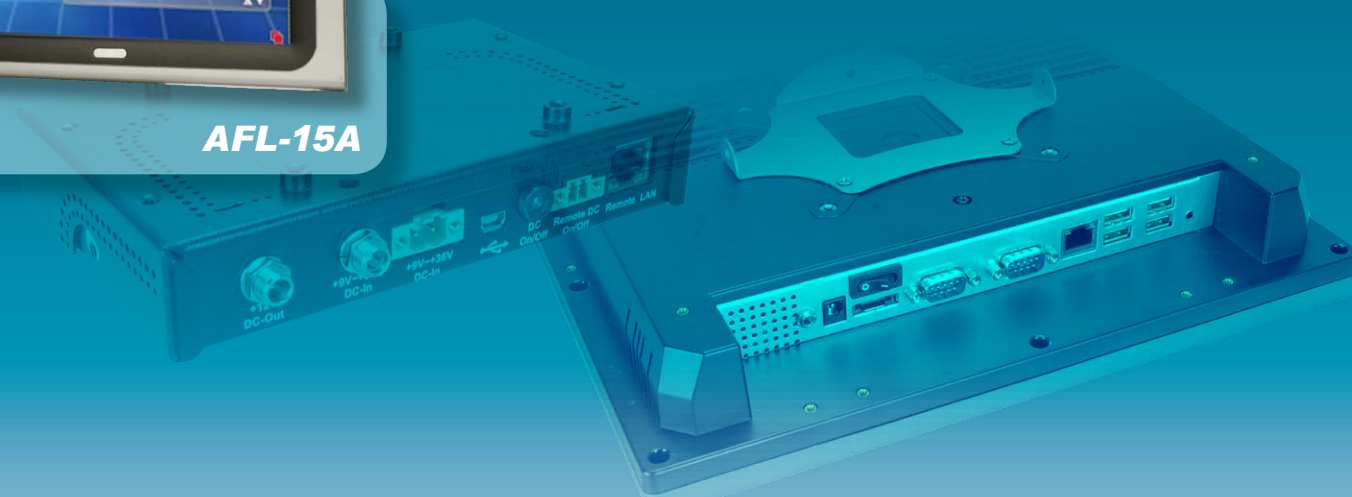
AFL-15A-LXPOS



AFL-10A



AFL-15A



Headquarters

威強工業電腦股份有限公司 IEI Technology Corp.
No. 29, Jhongsing Rd., Sijhih City, Taipei County, 221, Taiwan
TEL : +886-2-86916798 FAX : +886-2-66160028
sales@ieiworld.com www.ieiworld.com

America

IEI Technology USA Corp.
168 University Parkway, Pomona, CA 91768
TEL : +1-909-595-2819 FAX : +1-909-595-2816
sales@usa.ieiworld.com www.usa.ieiworld.com

China

威強工业电脑 IEI Technology (Shanghai) Co., Ltd.
上海市闵行区宜山路 1728 号 3 楼.
3F No. 1728 Yi-Shan Road, Min-Hang, ShangHai, China
TEL : +86-21-3462-7799 FAX : +86-21-3462-7798,3462-7797
sales@ieiworld.com.cn www.ieiworld.com.cn