

HSL-TB32-MD 32-CH Separate I/O Terminal Base ⚡

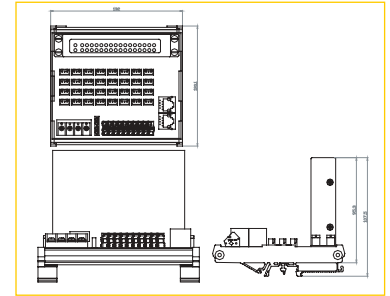


Specifications

General Description	Separate I/O wiring connection for HSL I/O modules Every I/O points uses 3-pin connector Pin definition is signal/ground/power (from left to right) Separate fuse protection for each I/O points (jumper selection) Support common/separate DC power supply (jumper selection) Terminator resistor on board (jumper selection) Interlocking design for rugged installation Power LED indicator DIN rail mounting Power and ground included for each signal channel
I/O Wire Gauge	20 AWG. (max.); 28AWG. (min)
Power supply	22V to +26V _{dc}
Support Module	HSL-DI16DO16-M-NN/PN/PP/NP, HSL-DI32-M-N/P, HSL-DO32-M-N/P

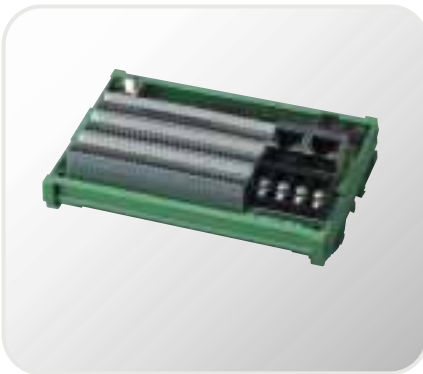
Dimensions

HSL-TB32-MD



129mm x 107mm x 47.5mm

HSL-TB32-M-DIN 32-CH I/O Terminal Base ⚡

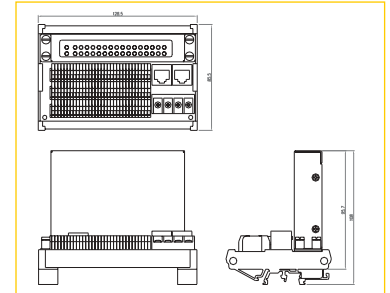


Specifications

General Description	Field I/O wiring connection for HSL I/O modules Spring terminal for easy field wiring Power and ground included for each signal channel Interlocking design for rugged installation Power LED indicator DIN rail mounting Terminator resistor on board
I/O Wire Gauge	20 AWG. (max.); 28AWG. (min.)
Power supply	22V to +26V _{dc}

Dimensions

HSL-TB32-M-DIN Series



128.5mm x 85.5mm x 108mm

HSL-TB32-U-DIN 32 Points Universal Terminal Base ⚡

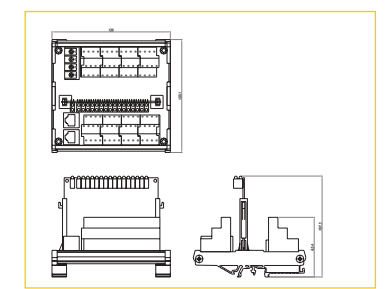


Specifications

General Description	Field I/O wiring connection for HSL I/O modules Spring terminal for easy field wiring Power and ground included for each signal channel Interlocking design for rugged installation Power LED indicator DIN rail mounting Terminator resistor on board
I/O Wire Gauge	20 AWG. (max.); 28AWG. (min.)
Power supply	22V to +26V _{dc}

Dimensions

HSL-TB32-U-DIN Series



126mm x 120.1mm x 107.3mm

HSL-TB64 64 Points High Density Terminal Base ⚡

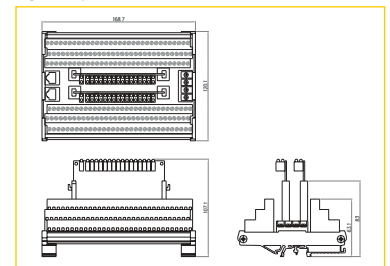


Specifications

General Description	Field I/O wiring connection for HSL I/O modules Spring terminal for easy field wiring Power and ground included for each signal channel Interlocking design for rugged installation Power LED indicator DIN rail mounting Terminator resistor on board
I/O Wire Gauge	20 AWG. (max.); 28AWG. (min.)
Power supply	22V to +26V _{dc}

Dimensions

HSL-TB64



168.7mm x 120.1mm x 107.1mm